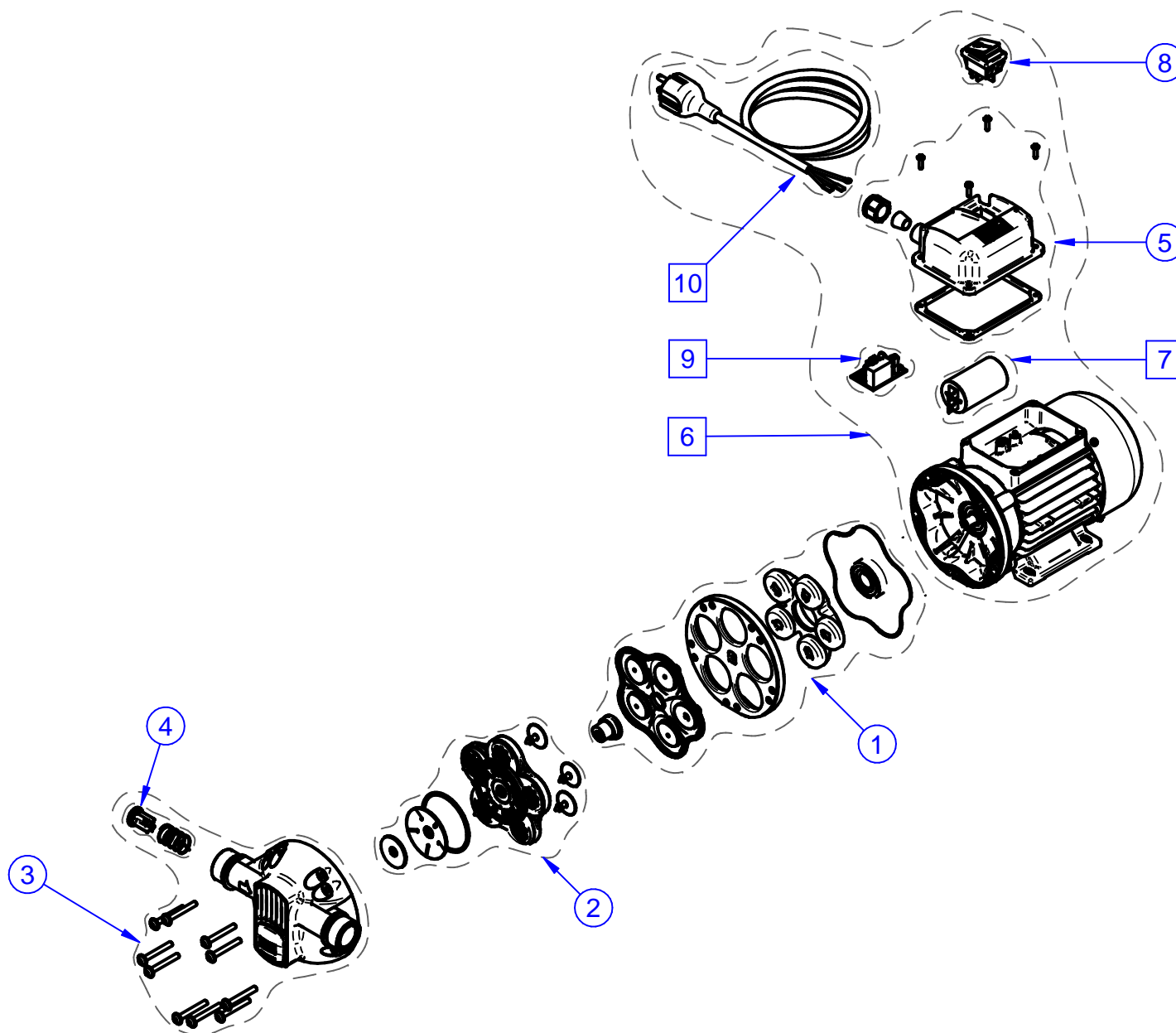


DESCRIPTION:
MEMBRANE PUMP 120/230 V

CODE:
LR_P00063

LAST RELEASE:
JULY 2019



Some components may vary in shape and color or not be present. Always follow codes and quantity shown in list. ○ fixed components □ variable components - - - only reference

Spare part		
R19441000	1	KIT MEMBRANE120/230V 3.5°*
R15979000	2	MEBRANE PUMP CHAMBERS KIT*
R18706000	3	KIT N HEAD MEMBRANE PUMP*
R18892000	4	KIT BY-PASS DIAPHRAGM PUMP NEW*
R16706000	5	MEMBRANE PUMP 230/50 TERM. BOX COVER KIT*
R08533000	7	CONDENSER 12,5 uF 0,5 HP MOTOR*
R16657000	8	BIPOLAR SWITCH 16A 250V*
R23060000	11	FAN MOTOR COVER MEC63 PLASTIC RAL7035*